

P/N:

N/A

DESIGNATION

N/A

Prepared by: Marta Guerrero Ramos

Date: 10-05-2010

Aproved by:

Date: 09-06-2010

DESCRIPTION:

REACTIVATION AND APPLICATION OF CONDUCTIVE PAINT (CHO_SHIELD "2002")

REFERENCE DOCUMENTS.

- IFMA-389 PAINTING AIRCRAFT GENERAL INSTRUCTIONS
- IFMA-447-40 SHEETS FOR THE PREPARATION AND APPLICATION OF CONDUCTIVE AND ANTISTATIC PAINTS.
- IFMA-310 USE OF DEGREASING PRODUCTS
- MP-62.41.10 CHROMATING TREATMENT BY ALODINE 1200 ON ALUMINIUM ALLOYS
- STL's:
 - 332A2101001702 Ind.E
 - 332A2101021002 Ind.C
 - 332A2401370305
 - 332A2400311103 Ind.A
 - 332A2111240305 Rev 0
 - 332A2111170405 Rev 0
- DRAWINGS:
 - 332A210100 AR
 - 332A210102 AM
 - 332A240137 Q
 - 332A240031 AO
 - 332A211124 R
 - 332A211117 U

MATERIALS AND EQUIPMENT.**Thinners, bases, Catalyst and degreasing products:**

- Diestone
 - HYSO 99.
 - Alodine 1132
 - BASE 2002/A
 - CATALYST 2002/B
 - THINNER: 2002/C
- } CHO-SHIELD 2002

Equipment:

- Vacuum cleaner and compressed air.
- White cotton cloths.
- Brush.
- Gun.
- Scott Brite.
- Abrasive paper (grit 400 or 320).
- Thermohygrograph

Safety equipment:

- Protective eyewear
- Disposable latex gloves
- Mask
- Disposable protective clothes

P/N:

N/A

DESIGNATION

N/A

Prepared by: Marta Guerrero Ramos

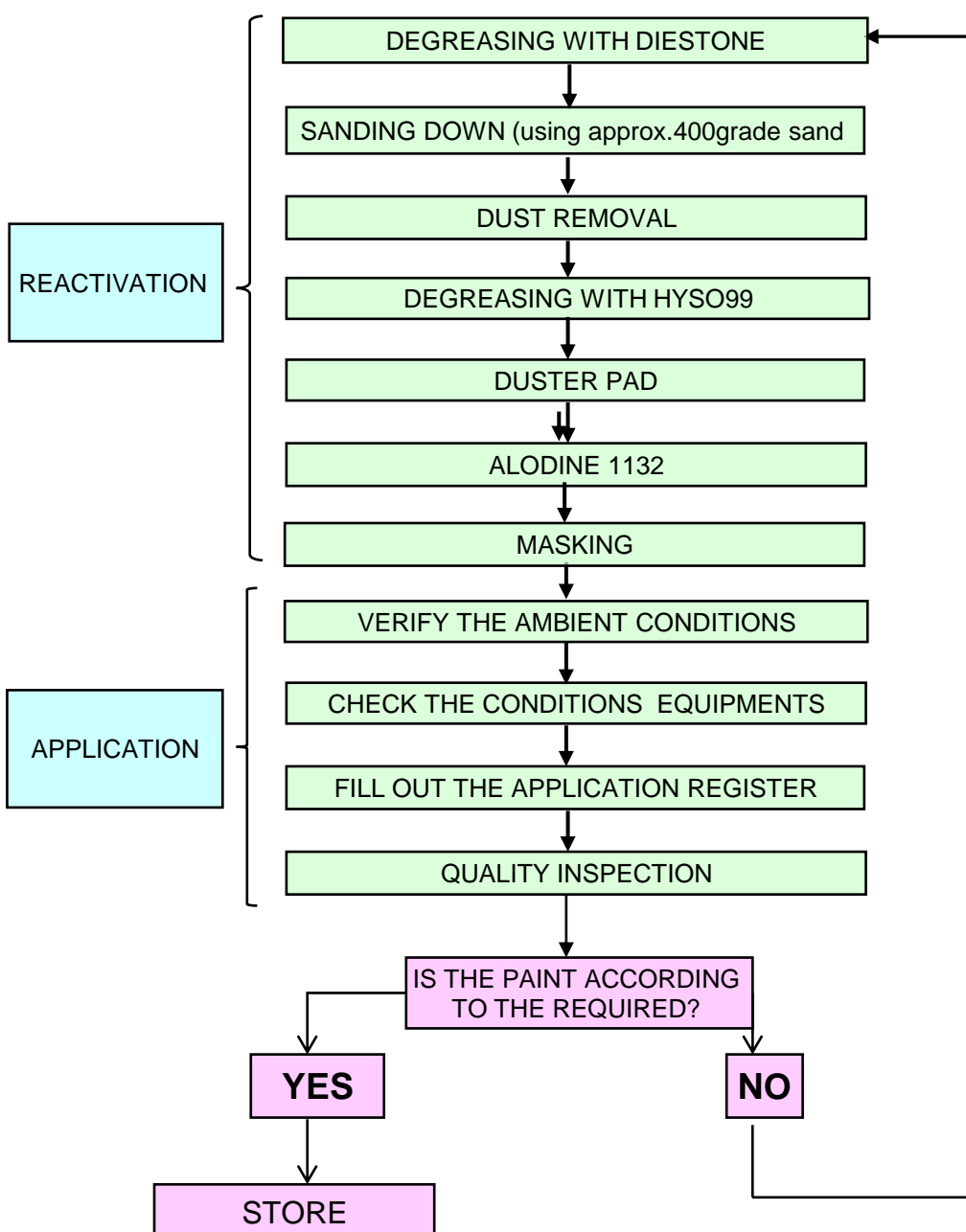
Date: 10-05-2010

Aproved by:

Date: 09-06-2010

DESCRIPTION:

REACTIVATION AND APPLICATION OF CONDUCTIVE PAINT (CHO_SHIELD "2002")

REACTIVATION AND APPLICATION OF CONDUCTIVE PAINT

P/N:

N/A

DESIGNATION

N/A

Prepared by: Marta Guerrero Ramos

Date: 10-05-2010

Approved by:

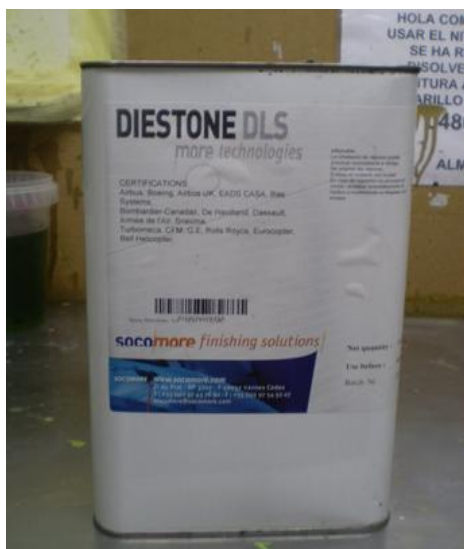
Date: 09-06-2010

DESCRIPTION:

REACTIVATION AND APPLICATION OF CONDUCTIVE PAINT (CHO_SHIELD "2002")

REACTIVATION (of a painted surface)

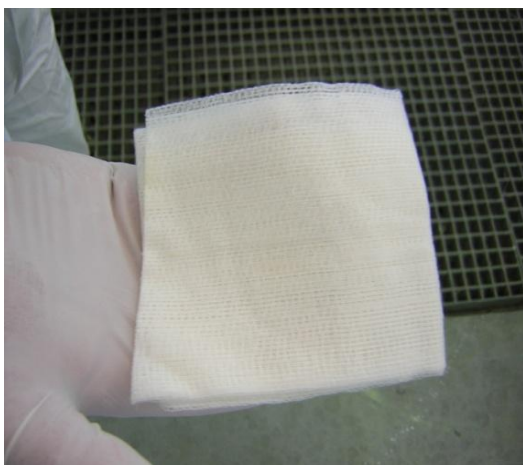
Degreasing/ cleaning with DIESTONE.



Sanding using approx. 320/400 grit abrasive paper.



Wiping with an "anti-dust" cloth.

After degreasing, protect part by dabbing Alodine 1132.
Painting operations shall be carried out within

P/N:

N/A

DESIGNATION

N/A

Prepared by: Marta Guerrero Ramos

Date: 10-05-2010

Aproved by:

Date: 09-06-2010

DESCRIPTION:

REACTIVATION AND APPLICATION OF CONDUCTIVE PAINT (CHO_SHIELD "2002")

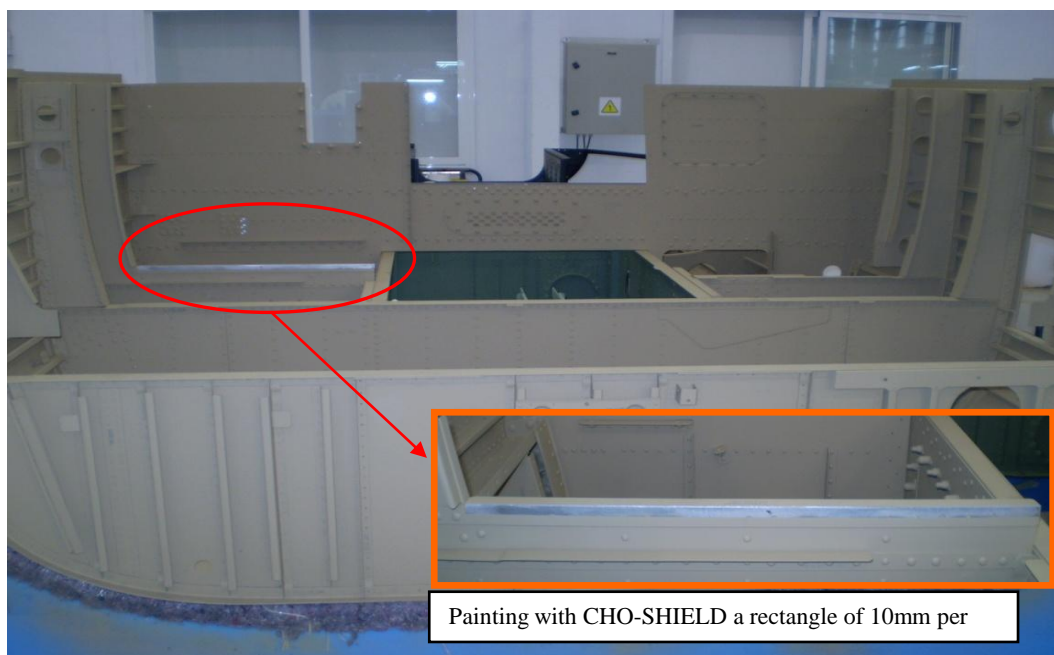
MASKING MATERIAL

Protect all surfaces which will be not painted with primer.

All metallizations, acrylic windows, tires, etc., must be masked with adhesive tape or stickers to prevent deposition of primer.



332A.21.1272.20



Painting with CHO-SHIELD a rectangle of 10mm per

P/N:

N/A

DESIGNATION

N/A

Prepared by: Marta Guerrero Ramos

Date: 10-05-2010

Aproved by:

Date: 09-06-2010

DESCRIPTION:

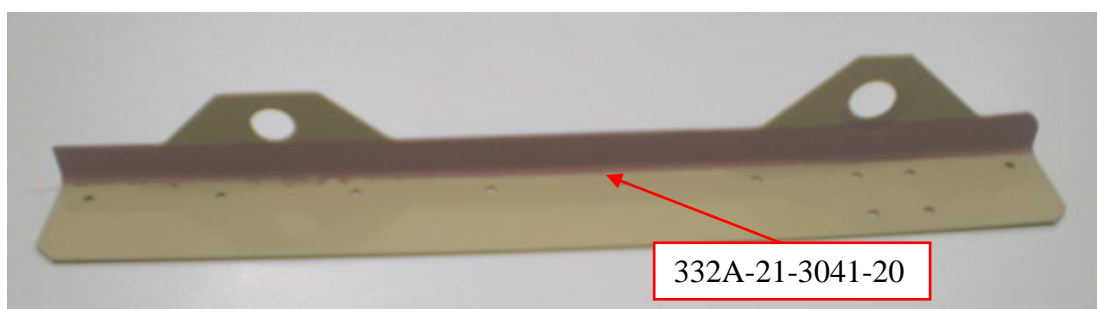
REACTIVATION AND APPLICATION OF CONDUCTIVE PAINT (CHO_SHIELD "2002")



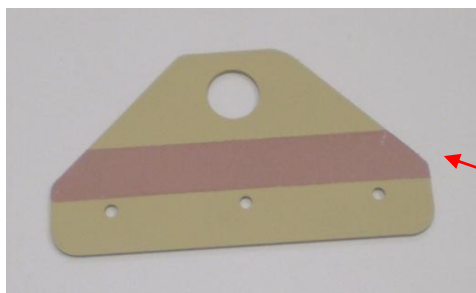
The following accompanying pieces where conductive paint (CHO-SHIELD 2002) is



332A-21-3042-20A01



332A-21-3041-20



332A-21-3043-20

P/N:

N/A

DESIGNATION

N/A

Prepared by: Marta Guerrero Ramos

Date: 10-05-2010

Approved by:

Date: 09-06-2010

DESCRIPTION:

REACTIVATION AND APPLICATION OF CONDUCTIVE PAINT (CHO_SHIELD "2002")

APPLICATION OF CONDUCTIVE PAINT (CHO_SHIELD

Verify that the ambient conditions for the application of conductive paint in the paint booth are within specified parameters.

TEMPERATURE: 15°C~25°C
RELATIVE HUMEDITY: 40%~70%

CHO_SHIELD 2002 is mixed according to the **TI G6-SP-**

Before the application of CHO_SHIELD-2002, check the perfect cleaning of the area of application, and that the application equipment is

It s obligatory to wear latex gloves and mask during the application of the painting.

Apply the mixture in two coats.
 Time between coats: 15 minutes
 Thickness of dry film is **60-120 µm**
 Application is done with nozzle diameter between 1.2 mm and 1.6mm, air pressure: 3 to

Fill out all data requiered in Application Register

- a) Mixing number
- b) Date / Time of application start
- c) Product
- d) Touch-up
- e) Paint type
- f) Relative Humidity
- g) Temperature
- h) End time of application
- i) Time of application start drying
- j) End time of application drying
- k) Drying temperature
- l) Operators (painter) sign
- m) Verification of thickness and paint adhesion

Quality Requirements after application of the CHO_SHIELD 2002: dry coat must be even and of uniform colour, with no surface irregularities such as blistering, pronounced "orange peel", grain, dullness, etc...

At 20°C, for mask (adhesive tape): 24 hours

P/N:

N/A

DESIGNATION

N/A

Prepared by: Marta Guerrero Ramos

Date: 10-05-2010

Aproved by:

Date: 09-06-2010

DESCRIPTION:

REACTIVATION AND APPLICATION OF CONDUCTIVE PAINT (CHO_SHIELD "2002")

REQUIREMENTS FOR TREATMENT OF WASTE AND PROTECTION EQUIPMENT.**utilization of the product standards**PRODUCT
DIESTONE

HARMFUL



FLAMMABL



MASK

DISPOSABLE
LATEXPROTECTIV
E EYEWEAR**HOW TO USE**

- Avoid prolonged contact with skin (use globes)
- Use mask (semimáscara) with replaceable filter for respiratory protection
- Use the minimum amount necessary, avoid accumulating rags soaked in the workplace. Because is a flammable liquid must be controled any possible sources of ignition (electrical, sparks with tools, smoke ..)

MEASURES OF HYGIENE

- Wash hands before eating and smoking
- Do not use for cleaning of stains on the skin

FIRST AID**INHALATION** : Move affected person to breathe clean air, call for medical attention.**SKIN** : Wash contaminated skin with soap and water. If irritation persists, call for medical attention.**EYES** : Act quickly. Flush eyes with water. call for medical attention immediately.**INGESTION** : Do not induce vomiting. Whenever the person is conscious give water to drink. If there isn't a fast recovery, call for medical attention.**IN CASE OF LEAKAGE**

- Absorb or prevent the spread of liquid product. Wash contaminated area with water.

IN CASE OF FIRE

- Can be used dry chemical powder and / or carbon dioxide. Not suitable water jet.

STORAGE

- Keep away from sources of heat or ignition. Do not smoke.

WASTE TREATMENT

- Do not throw residues down the drain.

COMMENTS

- Diestone is a solvent that can cause skin irritation on prolonged contact. Its vapors are flammable and inhalation of the same harmful.
- Keep container correctly closed.

P/N:

N/A

DESIGNATION

N/A

Prepared by: Marta Guerrero Ramos

Date: 10-05-2010

Aproved by:

Date: 09-06-2010

DESCRIPTION:

REACTIVATION AND APPLICATION OF CONDUCTIVE PAINT (CHO SHIELD "2002")

REQUIREMENTS FOR TREATMENT OF WASTE AND PROTECTION EQUIPMENT.**utilization of the product standards**PRODUCT
HYSO 99

HARMFUL



FLAMMABL



MASK

DISPOSABLE
LATEXPROTECTIV
E EYEWEAR**HOW TO USE**

- Avoid prolonged contact with skin (use globes)
- Use mask (semimáscara) with replaceable filter for respiratory protection
- Use the minimum amount necessary, avoid accumulating rags soaked in the workplace. Because is a flammable liquid must be controled any possible sources of ignition (electrical, sparks with tools, smoke ..)

MEASURES OF HYGIENE

- Wash hands before eating and smoking
- Do not use for cleaning of stains on the skin

FIRST AID**INHALATION** : Move affected person to breathe clean air, call for medical attention.**SKIN** : Wash contaminated skin with soap and water. If irritation persists, call for medical attention.**EYES** : Act quickly. Flush eyes with water. call for medical attention immediately.**INGESTION** : Do not induce vomiting. Whenever the person is conscious give water to drink. If there isn't a fast recovery, call for medical attention.**IN CASE OF LEAKAGE**

- Absorb or prevent the spread of liquid product. Wash contaminated area with water.

IN CASE OF FIRE

- Can be used dry chemical powder and / or carbon dioxide. Not suitable water jet.

STORAGE

- Keep away from sources of heat or ignition. Do not smoke.

WASTE TREATMENT

- Do not throw residues down the drain.

COMMENTS

- HYSO 99 is a solvent that can cause skin irritation on prolonged contact. Its vapors are flammable and inhalation of the same harmful.
- Keep container correctly closed.