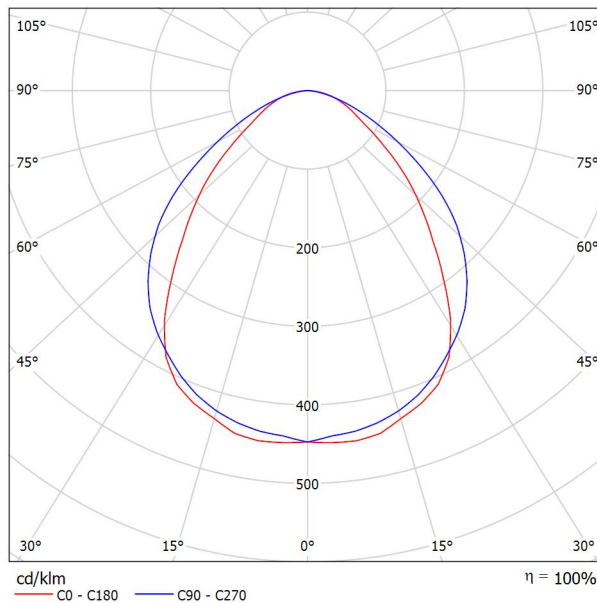




Proyecto elaborado por
Teléfono
Fax
e-Mail

PHILIPS RC120B W60L60 1xLED37S/830 PSD / Hoja de datos de luminarias

Emisión de luz 1:



Clasificación luminarias según CIE: 100
Código CIE Flux: 59 87 97 100 100

CoreLine empotrable: diseño elegante y fácil instalación Tanto si se trata de un nuevo edificio como de un espacio rehabilitado, los clientes prefieren soluciones de iluminación que combinen luz de calidad con un sustancial ahorro de energía y de mantenimiento. La luminaria CoreLine empotrable de la familia CoreLine LED puede emplearse para sustituir punto a punto las luminarias de fluorescencia en aplicaciones generales de iluminación. El proceso de selección, instalación y mantenimiento es sencillísimo.

Emisión de luz 1:

Valoración de deslumbramiento según UGR																																																																																																																																																																																																																																																						
ρ Techo	70	70	50	50	30	70	70	50	50	30																																																																																																																																																																																																																																												
ρ Paredes	50	30	50	30	30	50	30	50	30	30																																																																																																																																																																																																																																												
ρ Suelo	20	20	20	20	20	20	20	20	20	20																																																																																																																																																																																																																																												
Tamaño del local	Mirado en perpendicular al eje de lámpara					Mirado longitudinalmente al eje de lámpara																																																																																																																																																																																																																																																
X Y	2H	2H	18.2	19.4	18.5	19.6	19.8	20.2	21.3	20.5	21.6	21.8		3H	19.1	20.2	19.4	20.4	20.7	21.1	22.1	21.4	22.4	22.6	22.6		4H	19.5	20.5	19.9	20.8	21.1	21.3	22.3	21.7	22.6	22.9	22.9		6H	19.9	20.8	20.3	21.1	21.4	21.5	22.4	21.8	22.7	23.0	23.0		8H	20.0	20.9	20.4	21.2	21.5	21.5	22.4	21.9	22.7	23.0	23.0		12H	20.1	21.0	20.5	21.3	21.6	21.5	22.3	21.9	22.7	23.0	23.0		4H	2H	18.8	19.8	19.1	20.0	20.3	20.4	21.4	20.8	21.7	22.0		3H	19.9	20.7	20.2	21.0	21.4	21.5	22.3	21.8	22.6	23.0	23.0		4H	20.4	21.2	20.8	21.5	21.9	21.9	22.6	22.3	22.9	23.3	23.3		6H	20.9	21.6	21.4	22.0	22.4	22.1	22.8	22.5	23.1	23.5	23.5		8H	21.1	21.7	21.6	22.1	22.5	22.2	22.8	22.6	23.2	23.6	23.6		12H	21.3	21.8	21.7	22.2	22.6	22.2	22.7	22.7	23.2	23.6	23.6		8H	4H	20.7	21.3	21.1	21.7	22.1	22.0	22.6	22.4	23.0	23.4		6H	21.4	21.8	21.8	22.3	22.7	22.4	22.8	22.8	23.3	23.7	23.7		8H	21.6	22.0	22.1	22.5	23.0	22.5	22.9	23.0	23.3	23.8	23.8		12H	21.8	22.2	22.3	22.6	23.1	22.5	22.9	23.0	23.4	23.9	23.9		12H	4H	20.7	21.2	21.2	21.7	22.1	22.0	22.5	22.4	22.9	23.4		6H	21.4	21.8	21.9	22.3	22.8	22.4	22.8	22.9	23.3	23.7	23.7		8H	21.7	22.1	22.2	22.5	23.0	22.5	22.9	23.0	23.4	23.9	23.9
	3H	19.1	20.2	19.4	20.4	20.7	21.1	22.1	21.4	22.4	22.6	22.6		4H	19.5	20.5	19.9	20.8	21.1	21.3	22.3	21.7	22.6	22.9	22.9		6H	19.9	20.8	20.3	21.1	21.4	21.5	22.4	21.8	22.7	23.0	23.0		8H	20.0	20.9	20.4	21.2	21.5	21.5	22.4	21.9	22.7	23.0	23.0		12H	20.1	21.0	20.5	21.3	21.6	21.5	22.3	21.9	22.7	23.0	23.0		4H	2H	18.8	19.8	19.1	20.0	20.3	20.4	21.4	20.8	21.7	22.0		3H	19.9	20.7	20.2	21.0	21.4	21.5	22.3	21.8	22.6	23.0	23.0		4H	20.4	21.2	20.8	21.5	21.9	21.9	22.6	22.3	22.9	23.3	23.3		6H	20.9	21.6	21.4	22.0	22.4	22.1	22.8	22.5	23.1	23.5	23.5		8H	21.1	21.7	21.6	22.1	22.5	22.2	22.8	22.6	23.2	23.6	23.6		12H	21.3	21.8	21.7	22.2	22.6	22.2	22.7	22.7	23.2	23.6	23.6		8H	4H	20.7	21.3	21.1	21.7	22.1	22.0	22.6	22.4	23.0	23.4		6H	21.4	21.8	21.8	22.3	22.7	22.4	22.8	22.8	23.3	23.7	23.7		8H	21.6	22.0	22.1	22.5	23.0	22.5	22.9	23.0	23.3	23.8	23.8		12H	21.8	22.2	22.3	22.6	23.1	22.5	22.9	23.0	23.4	23.9	23.9		12H	4H	20.7	21.2	21.2	21.7	22.1	22.0	22.5	22.4	22.9	23.4		6H	21.4	21.8	21.9	22.3	22.8	22.4	22.8	22.9	23.3	23.7	23.7		8H	21.7	22.1	22.2	22.5	23.0	22.5	22.9	23.0	23.4	23.9	23.9													
	4H	19.5	20.5	19.9	20.8	21.1	21.3	22.3	21.7	22.6	22.9	22.9		6H	19.9	20.8	20.3	21.1	21.4	21.5	22.4	21.8	22.7	23.0	23.0		8H	20.0	20.9	20.4	21.2	21.5	21.5	22.4	21.9	22.7	23.0	23.0		12H	20.1	21.0	20.5	21.3	21.6	21.5	22.3	21.9	22.7	23.0	23.0		4H	2H	18.8	19.8	19.1	20.0	20.3	20.4	21.4	20.8	21.7	22.0		3H	19.9	20.7	20.2	21.0	21.4	21.5	22.3	21.8	22.6	23.0	23.0		4H	20.4	21.2	20.8	21.5	21.9	21.9	22.6	22.3	22.9	23.3	23.3		6H	20.9	21.6	21.4	22.0	22.4	22.1	22.8	22.5	23.1	23.5	23.5		8H	21.1	21.7	21.6	22.1	22.5	22.2	22.8	22.6	23.2	23.6	23.6		12H	21.3	21.8	21.7	22.2	22.6	22.2	22.7	22.7	23.2	23.6	23.6		8H	4H	20.7	21.3	21.1	21.7	22.1	22.0	22.6	22.4	23.0	23.4		6H	21.4	21.8	21.8	22.3	22.7	22.4	22.8	22.8	23.3	23.7	23.7		8H	21.6	22.0	22.1	22.5	23.0	22.5	22.9	23.0	23.3	23.8	23.8		12H	21.8	22.2	22.3	22.6	23.1	22.5	22.9	23.0	23.4	23.9	23.9		12H	4H	20.7	21.2	21.2	21.7	22.1	22.0	22.5	22.4	22.9	23.4		6H	21.4	21.8	21.9	22.3	22.8	22.4	22.8	22.9	23.3	23.7	23.7		8H	21.7	22.1	22.2	22.5	23.0	22.5	22.9	23.0	23.4	23.9	23.9																										
	6H	19.9	20.8	20.3	21.1	21.4	21.5	22.4	21.8	22.7	23.0	23.0		8H	20.0	20.9	20.4	21.2	21.5	21.5	22.4	21.9	22.7	23.0	23.0		12H	20.1	21.0	20.5	21.3	21.6	21.5	22.3	21.9	22.7	23.0	23.0		4H	2H	18.8	19.8	19.1	20.0	20.3	20.4	21.4	20.8	21.7	22.0		3H	19.9	20.7	20.2	21.0	21.4	21.5	22.3	21.8	22.6	23.0	23.0		4H	20.4	21.2	20.8	21.5	21.9	21.9	22.6	22.3	22.9	23.3	23.3		6H	20.9	21.6	21.4	22.0	22.4	22.1	22.8	22.5	23.1	23.5	23.5		8H	21.1	21.7	21.6	22.1	22.5	22.2	22.8	22.6	23.2	23.6	23.6		12H	21.3	21.8	21.7	22.2	22.6	22.2	22.7	22.7	23.2	23.6	23.6		8H	4H	20.7	21.3	21.1	21.7	22.1	22.0	22.6	22.4	23.0	23.4		6H	21.4	21.8	21.8	22.3	22.7	22.4	22.8	22.8	23.3	23.7	23.7		8H	21.6	22.0	22.1	22.5	23.0	22.5	22.9	23.0	23.3	23.8	23.8		12H	21.8	22.2	22.3	22.6	23.1	22.5	22.9	23.0	23.4	23.9	23.9		12H	4H	20.7	21.2	21.2	21.7	22.1	22.0	22.5	22.4	22.9	23.4		6H	21.4	21.8	21.9	22.3	22.8	22.4	22.8	22.9	23.3	23.7	23.7		8H	21.7	22.1	22.2	22.5	23.0	22.5	22.9	23.0	23.4	23.9	23.9																																							
	8H	20.0	20.9	20.4	21.2	21.5	21.5	22.4	21.9	22.7	23.0	23.0		12H	20.1	21.0	20.5	21.3	21.6	21.5	22.3	21.9	22.7	23.0	23.0		4H	2H	18.8	19.8	19.1	20.0	20.3	20.4	21.4	20.8	21.7	22.0		3H	19.9	20.7	20.2	21.0	21.4	21.5	22.3	21.8	22.6	23.0	23.0		4H	20.4	21.2	20.8	21.5	21.9	21.9	22.6	22.3	22.9	23.3	23.3		6H	20.9	21.6	21.4	22.0	22.4	22.1	22.8	22.5	23.1	23.5	23.5		8H	21.1	21.7	21.6	22.1	22.5	22.2	22.8	22.6	23.2	23.6	23.6		12H	21.3	21.8	21.7	22.2	22.6	22.2	22.7	22.7	23.2	23.6	23.6		8H	4H	20.7	21.3	21.1	21.7	22.1	22.0	22.6	22.4	23.0	23.4		6H	21.4	21.8	21.8	22.3	22.7	22.4	22.8	22.8	23.3	23.7	23.7		8H	21.6	22.0	22.1	22.5	23.0	22.5	22.9	23.0	23.3	23.8	23.8		12H	21.8	22.2	22.3	22.6	23.1	22.5	22.9	23.0	23.4	23.9	23.9		12H	4H	20.7	21.2	21.2	21.7	22.1	22.0	22.5	22.4	22.9	23.4		6H	21.4	21.8	21.9	22.3	22.8	22.4	22.8	22.9	23.3	23.7	23.7		8H	21.7	22.1	22.2	22.5	23.0	22.5	22.9	23.0	23.4	23.9	23.9																																																				
	12H	20.1	21.0	20.5	21.3	21.6	21.5	22.3	21.9	22.7	23.0	23.0		4H	2H	18.8	19.8	19.1	20.0	20.3	20.4	21.4	20.8	21.7	22.0		3H	19.9	20.7	20.2	21.0	21.4	21.5	22.3	21.8	22.6	23.0	23.0		4H	20.4	21.2	20.8	21.5	21.9	21.9	22.6	22.3	22.9	23.3	23.3		6H	20.9	21.6	21.4	22.0	22.4	22.1	22.8	22.5	23.1	23.5	23.5		8H	21.1	21.7	21.6	22.1	22.5	22.2	22.8	22.6	23.2	23.6	23.6		12H	21.3	21.8	21.7	22.2	22.6	22.2	22.7	22.7	23.2	23.6	23.6		8H	4H	20.7	21.3	21.1	21.7	22.1	22.0	22.6	22.4	23.0	23.4		6H	21.4	21.8	21.8	22.3	22.7	22.4	22.8	22.8	23.3	23.7	23.7		8H	21.6	22.0	22.1	22.5	23.0	22.5	22.9	23.0	23.3	23.8	23.8		12H	21.8	22.2	22.3	22.6	23.1	22.5	22.9	23.0	23.4	23.9	23.9		12H	4H	20.7	21.2	21.2	21.7	22.1	22.0	22.5	22.4	22.9	23.4		6H	21.4	21.8	21.9	22.3	22.8	22.4	22.8	22.9	23.3	23.7	23.7		8H	21.7	22.1	22.2	22.5	23.0	22.5	22.9	23.0	23.4	23.9	23.9																																																																	
	4H	2H	18.8	19.8	19.1	20.0	20.3	20.4	21.4	20.8	21.7	22.0		3H	19.9	20.7	20.2	21.0	21.4	21.5	22.3	21.8	22.6	23.0	23.0		4H	20.4	21.2	20.8	21.5	21.9	21.9	22.6	22.3	22.9	23.3	23.3		6H	20.9	21.6	21.4	22.0	22.4	22.1	22.8	22.5	23.1	23.5	23.5		8H	21.1	21.7	21.6	22.1	22.5	22.2	22.8	22.6	23.2	23.6	23.6		12H	21.3	21.8	21.7	22.2	22.6	22.2	22.7	22.7	23.2	23.6	23.6		8H	4H	20.7	21.3	21.1	21.7	22.1	22.0	22.6	22.4	23.0	23.4		6H	21.4	21.8	21.8	22.3	22.7	22.4	22.8	22.8	23.3	23.7	23.7		8H	21.6	22.0	22.1	22.5	23.0	22.5	22.9	23.0	23.3	23.8	23.8		12H	21.8	22.2	22.3	22.6	23.1	22.5	22.9	23.0	23.4	23.9	23.9		12H	4H	20.7	21.2	21.2	21.7	22.1	22.0	22.5	22.4	22.9	23.4		6H	21.4	21.8	21.9	22.3	22.8	22.4	22.8	22.9	23.3	23.7	23.7		8H	21.7	22.1	22.2	22.5	23.0	22.5	22.9	23.0	23.4	23.9	23.9																																																																														
	3H	19.9	20.7	20.2	21.0	21.4	21.5	22.3	21.8	22.6	23.0	23.0		4H	20.4	21.2	20.8	21.5	21.9	21.9	22.6	22.3	22.9	23.3	23.3		6H	20.9	21.6	21.4	22.0	22.4	22.1	22.8	22.5	23.1	23.5	23.5		8H	21.1	21.7	21.6	22.1	22.5	22.2	22.8	22.6	23.2	23.6	23.6		12H	21.3	21.8	21.7	22.2	22.6	22.2	22.7	22.7	23.2	23.6	23.6		8H	4H	20.7	21.3	21.1	21.7	22.1	22.0	22.6	22.4	23.0	23.4		6H	21.4	21.8	21.8	22.3	22.7	22.4	22.8	22.8	23.3	23.7	23.7		8H	21.6	22.0	22.1	22.5	23.0	22.5	22.9	23.0	23.3	23.8	23.8		12H	21.8	22.2	22.3	22.6	23.1	22.5	22.9	23.0	23.4	23.9	23.9		12H	4H	20.7	21.2	21.2	21.7	22.1	22.0	22.5	22.4	22.9	23.4		6H	21.4	21.8	21.9	22.3	22.8	22.4	22.8	22.9	23.3	23.7	23.7		8H	21.7	22.1	22.2	22.5	23.0	22.5	22.9	23.0	23.4	23.9	23.9																																																																																											
	4H	20.4	21.2	20.8	21.5	21.9	21.9	22.6	22.3	22.9	23.3	23.3		6H	20.9	21.6	21.4	22.0	22.4	22.1	22.8	22.5	23.1	23.5	23.5		8H	21.1	21.7	21.6	22.1	22.5	22.2	22.8	22.6	23.2	23.6	23.6		12H	21.3	21.8	21.7	22.2	22.6	22.2	22.7	22.7	23.2	23.6	23.6		8H	4H	20.7	21.3	21.1	21.7	22.1	22.0	22.6	22.4	23.0	23.4		6H	21.4	21.8	21.8	22.3	22.7	22.4	22.8	22.8	23.3	23.7	23.7		8H	21.6	22.0	22.1	22.5	23.0	22.5	22.9	23.0	23.3	23.8	23.8		12H	21.8	22.2	22.3	22.6	23.1	22.5	22.9	23.0	23.4	23.9	23.9		12H	4H	20.7	21.2	21.2	21.7	22.1	22.0	22.5	22.4	22.9	23.4		6H	21.4	21.8	21.9	22.3	22.8	22.4	22.8	22.9	23.3	23.7	23.7		8H	21.7	22.1	22.2	22.5	23.0	22.5	22.9	23.0	23.4	23.9	23.9																																																																																																								
	6H	20.9	21.6	21.4	22.0	22.4	22.1	22.8	22.5	23.1	23.5	23.5		8H	21.1	21.7	21.6	22.1	22.5	22.2	22.8	22.6	23.2	23.6	23.6		12H	21.3	21.8	21.7	22.2	22.6	22.2	22.7	22.7	23.2	23.6	23.6		8H	4H	20.7	21.3	21.1	21.7	22.1	22.0	22.6	22.4	23.0	23.4		6H	21.4	21.8	21.8	22.3	22.7	22.4	22.8	22.8	23.3	23.7	23.7		8H	21.6	22.0	22.1	22.5	23.0	22.5	22.9	23.0	23.3	23.8	23.8		12H	21.8	22.2	22.3	22.6	23.1	22.5	22.9	23.0	23.4	23.9	23.9		12H	4H	20.7	21.2	21.2	21.7	22.1	22.0	22.5	22.4	22.9	23.4		6H	21.4	21.8	21.9	22.3	22.8	22.4	22.8	22.9	23.3	23.7	23.7		8H	21.7	22.1	22.2	22.5	23.0	22.5	22.9	23.0	23.4	23.9	23.9																																																																																																																					
	8H	21.1	21.7	21.6	22.1	22.5	22.2	22.8	22.6	23.2	23.6	23.6		12H	21.3	21.8	21.7	22.2	22.6	22.2	22.7	22.7	23.2	23.6	23.6		8H	4H	20.7	21.3	21.1	21.7	22.1	22.0	22.6	22.4	23.0	23.4		6H	21.4	21.8	21.8	22.3	22.7	22.4	22.8	22.8	23.3	23.7	23.7		8H	21.6	22.0	22.1	22.5	23.0	22.5	22.9	23.0	23.3	23.8	23.8		12H	21.8	22.2	22.3	22.6	23.1	22.5	22.9	23.0	23.4	23.9	23.9		12H	4H	20.7	21.2	21.2	21.7	22.1	22.0	22.5	22.4	22.9	23.4		6H	21.4	21.8	21.9	22.3	22.8	22.4	22.8	22.9	23.3	23.7	23.7		8H	21.7	22.1	22.2	22.5	23.0	22.5	22.9	23.0	23.4	23.9	23.9																																																																																																																																		
	12H	21.3	21.8	21.7	22.2	22.6	22.2	22.7	22.7	23.2	23.6	23.6		8H	4H	20.7	21.3	21.1	21.7	22.1	22.0	22.6	22.4	23.0	23.4		6H	21.4	21.8	21.8	22.3	22.7	22.4	22.8	22.8	23.3	23.7	23.7		8H	21.6	22.0	22.1	22.5	23.0	22.5	22.9	23.0	23.3	23.8	23.8		12H	21.8	22.2	22.3	22.6	23.1	22.5	22.9	23.0	23.4	23.9	23.9		12H	4H	20.7	21.2	21.2	21.7	22.1	22.0	22.5	22.4	22.9	23.4		6H	21.4	21.8	21.9	22.3	22.8	22.4	22.8	22.9	23.3	23.7	23.7		8H	21.7	22.1	22.2	22.5	23.0	22.5	22.9	23.0	23.4	23.9	23.9																																																																																																																																															
	8H	4H	20.7	21.3	21.1	21.7	22.1	22.0	22.6	22.4	23.0	23.4		6H	21.4	21.8	21.8	22.3	22.7	22.4	22.8	22.8	23.3	23.7	23.7		8H	21.6	22.0	22.1	22.5	23.0	22.5	22.9	23.0	23.3	23.8	23.8		12H	21.8	22.2	22.3	22.6	23.1	22.5	22.9	23.0	23.4	23.9	23.9		12H	4H	20.7	21.2	21.2	21.7	22.1	22.0	22.5	22.4	22.9	23.4		6H	21.4	21.8	21.9	22.3	22.8	22.4	22.8	22.9	23.3	23.7	23.7		8H	21.7	22.1	22.2	22.5	23.0	22.5	22.9	23.0	23.4	23.9	23.9																																																																																																																																																												
	6H	21.4	21.8	21.8	22.3	22.7	22.4	22.8	22.8	23.3	23.7	23.7		8H	21.6	22.0	22.1	22.5	23.0	22.5	22.9	23.0	23.3	23.8	23.8		12H	21.8	22.2	22.3	22.6	23.1	22.5	22.9	23.0	23.4	23.9	23.9		12H	4H	20.7	21.2	21.2	21.7	22.1	22.0	22.5	22.4	22.9	23.4		6H	21.4	21.8	21.9	22.3	22.8	22.4	22.8	22.9	23.3	23.7	23.7		8H	21.7	22.1	22.2	22.5	23.0	22.5	22.9	23.0	23.4	23.9	23.9																																																																																																																																																																									
	8H	21.6	22.0	22.1	22.5	23.0	22.5	22.9	23.0	23.3	23.8	23.8		12H	21.8	22.2	22.3	22.6	23.1	22.5	22.9	23.0	23.4	23.9	23.9		12H	4H	20.7	21.2	21.2	21.7	22.1	22.0	22.5	22.4	22.9	23.4		6H	21.4	21.8	21.9	22.3	22.8	22.4	22.8	22.9	23.3	23.7	23.7		8H	21.7	22.1	22.2	22.5	23.0	22.5	22.9	23.0	23.4	23.9	23.9																																																																																																																																																																																						
	12H	21.8	22.2	22.3	22.6	23.1	22.5	22.9	23.0	23.4	23.9	23.9		12H	4H	20.7	21.2	21.2	21.7	22.1	22.0	22.5	22.4	22.9	23.4		6H	21.4	21.8	21.9	22.3	22.8	22.4	22.8	22.9	23.3	23.7	23.7		8H	21.7	22.1	22.2	22.5	23.0	22.5	22.9	23.0	23.4	23.9	23.9																																																																																																																																																																																																			
	12H	4H	20.7	21.2	21.2	21.7	22.1	22.0	22.5	22.4	22.9	23.4		6H	21.4	21.8	21.9	22.3	22.8	22.4	22.8	22.9	23.3	23.7	23.7		8H	21.7	22.1	22.2	22.5	23.0	22.5	22.9	23.0	23.4	23.9	23.9																																																																																																																																																																																																																
	6H	21.4	21.8	21.9	22.3	22.8	22.4	22.8	22.9	23.3	23.7	23.7		8H	21.7	22.1	22.2	22.5	23.0	22.5	22.9	23.0	23.4	23.9	23.9																																																																																																																																																																																																																													
	8H	21.7	22.1	22.2	22.5	23.0	22.5	22.9	23.0	23.4	23.9	23.9																																																																																																																																																																																																																																										

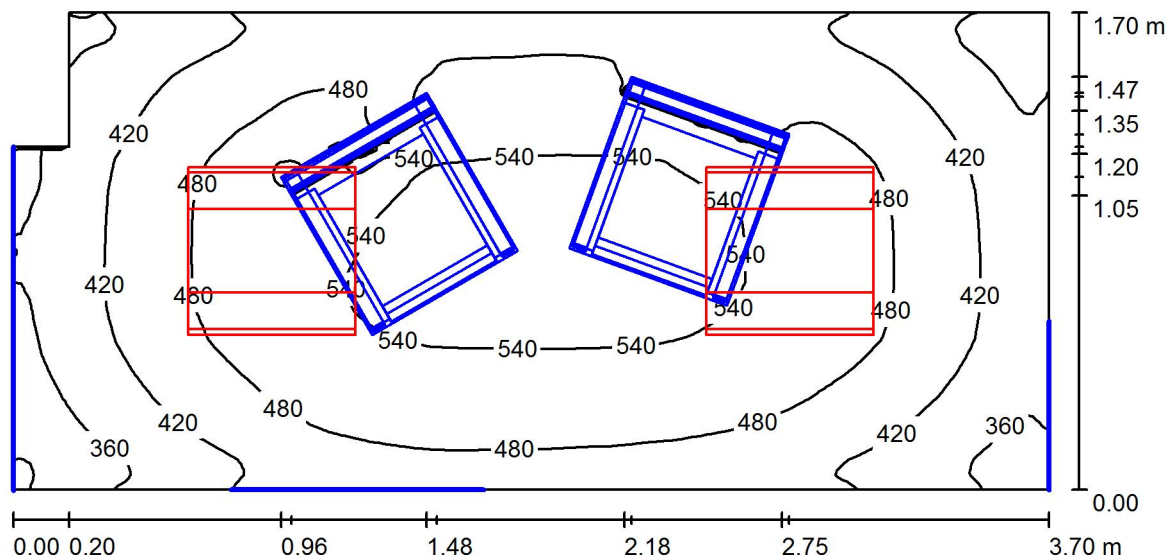
Variación de la posición del espectador para separaciones S entre luminarias		
S = 1.0H	+0.2 / -0.3	+0.2 / -0.3
S = 1.5H	+0.4 / -0.9	+0.5 / -0.7
S = 2.0H	+0.9 / -1.2	+1.4 / -1.4
Tabla estándar	BK05	BK03
Sumando de corrección	4.2	4.5

Índice de deslumbramiento corregido en relación a 3700lm Flujo luminoso total



Proyecto elaborado por
Teléfono
Fax
e-Mail

P2-ATT Paciente / Resumen



Altura del local: 2.800 m, Altura de montaje: 2.800 m, Factor mantenimiento: 0.80

Valores en Lux, Escala 1:27

Superficie	ρ [%]	E _m [lx]	E _{min} [lx]	E _{max} [lx]	E _{min} / E _m
Plano útil	/	468	288	566	0.616
Suelo	20	259	8.98	377	0.035
Techo	70	119	59	139	0.497
Paredes (6)	50	257	73	519	/

Plano útil:

Altura: 0.700 m
Trama: 128 x 128 Puntos
Zona marginal: 0.000 m

Lista de piezas - Luminarias

N°	Pieza	Designación (Factor de corrección)	Φ (Luminaria) [lm]	Φ (Lámparas) [lm]	P [W]
1	2	PHILIPS RC120B W60L60 1xLED37S/830 PSD (1.000)	3700	3700	37.5
			Total: 7400	Total: 7400	75.0

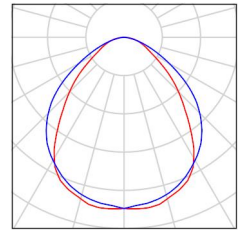
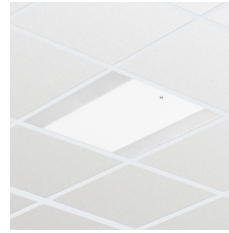
Valor de eficiencia energética: 12.11 W/m² = 2.59 W/m²/100 lx (Base: 6.19 m²)



Proyecto elaborado por
Teléfono
Fax
e-Mail

P2-ATT Paciente / Lista de luminarias

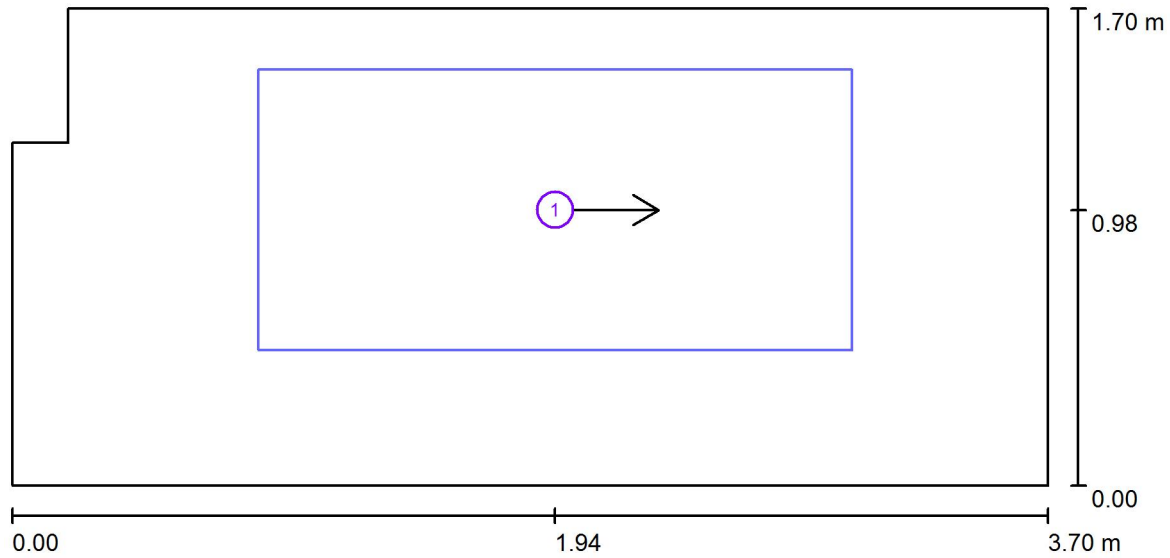
2 Pieza PHILIPS RC120B W60L60 1xLED37S/830 PSD
N° de artículo:
Flujo luminoso (Luminaria): 3700 lm
Flujo luminoso (Lámparas): 3700 lm
Potencia de las luminarias: 37.5 W
Clasificación luminarias según CIE: 100
Código CIE Flux: 59 87 97 100 100
Lámpara: 1 x LED37S/830/- (Factor de corrección 1.000).





Proyecto elaborado por
Teléfono
Fax
e-Mail

P2-ATT Paciente / Superficies UGR (lista de coordenadas)



Escala 1 : 27

Lista de superficies UGR

N°	Designación	Posición [m]			Tamaño [m]		Dirección visual [°]
		X	Y	Z	L	A	
1	Superficie de cálculo UGR 1	1.940	0.982	1.000	2.121	1.000	0.0



Proyecto elaborado por
Teléfono
Fax
e-Mail

P2-ATT Paciente / Resultados luminotécnicos

Flujo luminoso total: 7400 lm
Potencia total: 75.0 W
Factor mantenimiento: 0.80
Zona marginal: 0.000 m

Superficie	Intensidades lumínicas medias [lx]			Grado de reflexión [%]	Densidad lumínica media [cd/m ²]
	directo	indirecto	total		
Plano útil	341	127	468	/	/
Suelo	173	85	259	20	16
Techo	0.00	119	119	70	26
Pared 1	140	110	249	50	40
Pared 2	159	107	265	50	42
Pared 3	147	109	255	50	41
Pared 4	144	111	256	50	41
Pared 5	80	97	177	50	28
Pared 6	178	106	284	50	45

Simetrías en el plano útil

E_{\min} / E_{\max} : 0.616 (1:2)

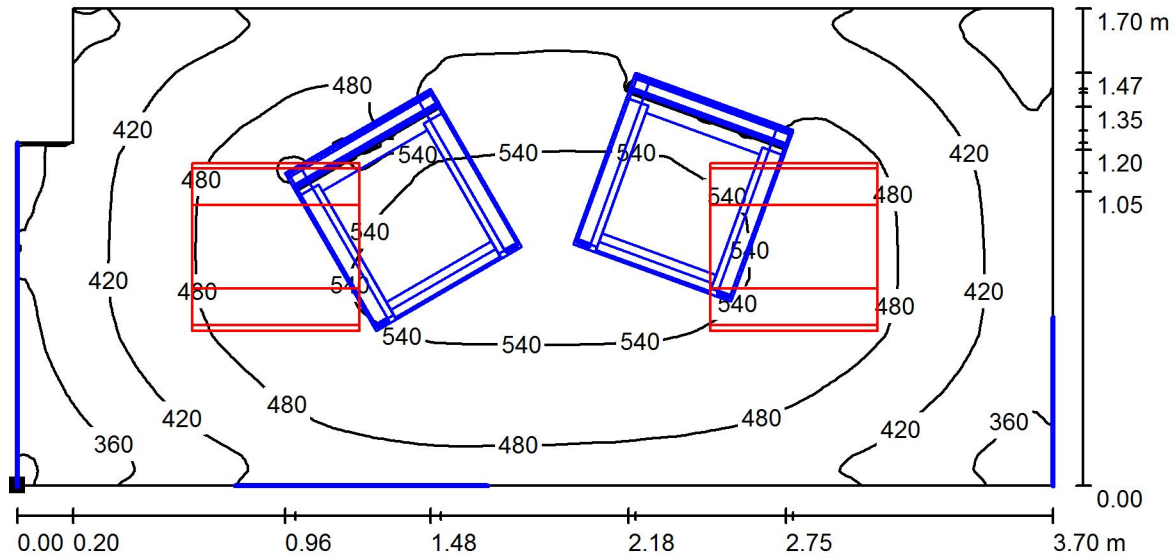
E_{\min} / E_{\max} : 0.509 (1:2)

Valor de eficiencia energética: 12.11 W/m² = 2.59 W/m²/100 lx (Base: 6.19 m²)



Proyecto elaborado por
Teléfono
Fax
e-Mail

P2-ATT Paciente / Plano útil / Isolíneas (E)



Valores en Lux, Escala 1 : 27

Situación de la superficie en el local:
Punto marcado:
(0.000 m, 0.000 m, 0.700 m)



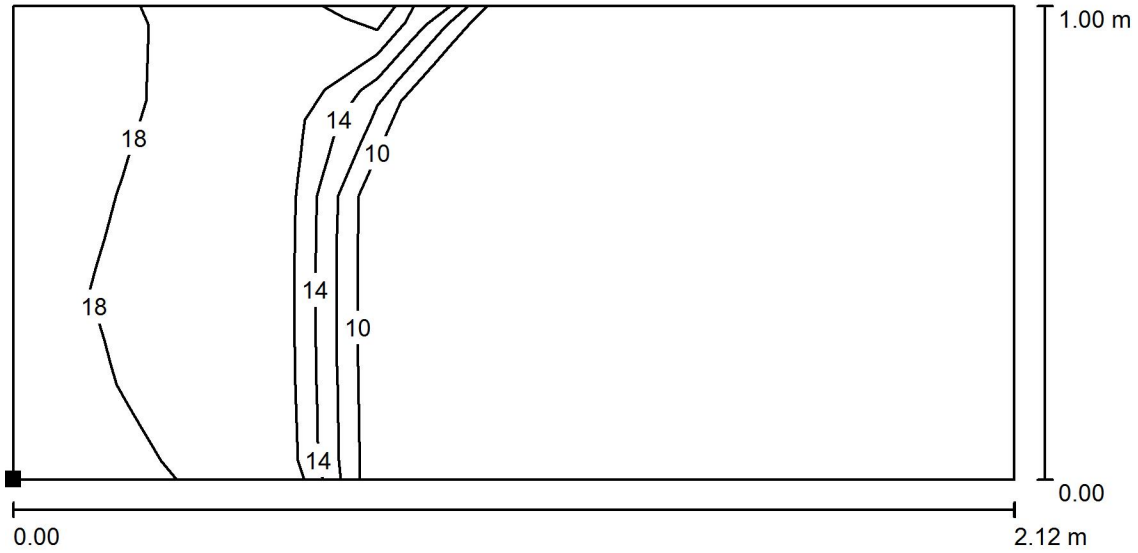
Trama: 128 x 128 Puntos

E_m [lx]	E_{min} [lx]	E_{max} [lx]	E_{min} / E_m	E_{min} / E_{max}
468	288	566	0.616	0.509



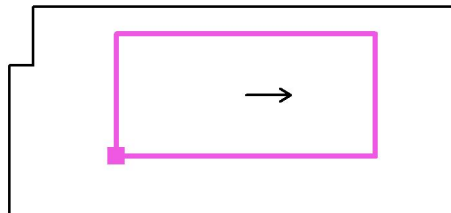
Proyecto elaborado por
Teléfono
Fax
e-Mail

P2-ATT Paciente / Superficie de cálculo UGR 1 / Isolíneas (UGR)



Escala 1 : 16

Situación de la superficie en el local:
Punto marcado:
(0.880 m, 0.482 m, 1.000 m)



Trama: 11 x 5 Puntos

Min
/

Max
18